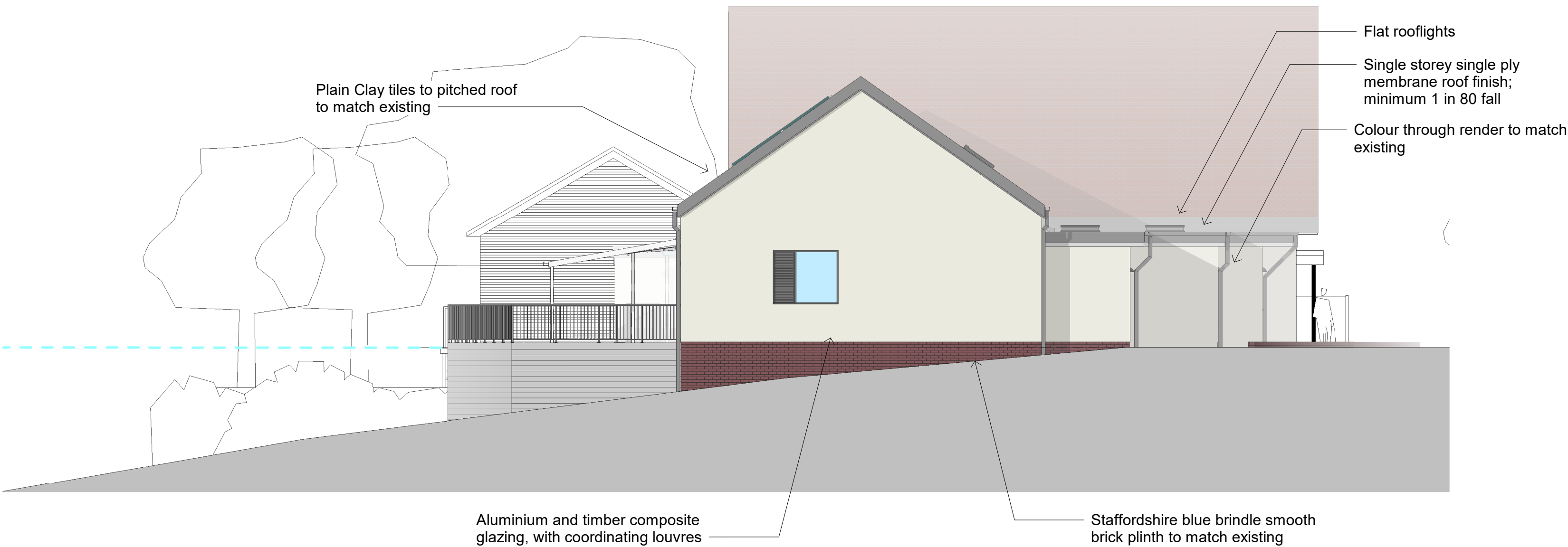
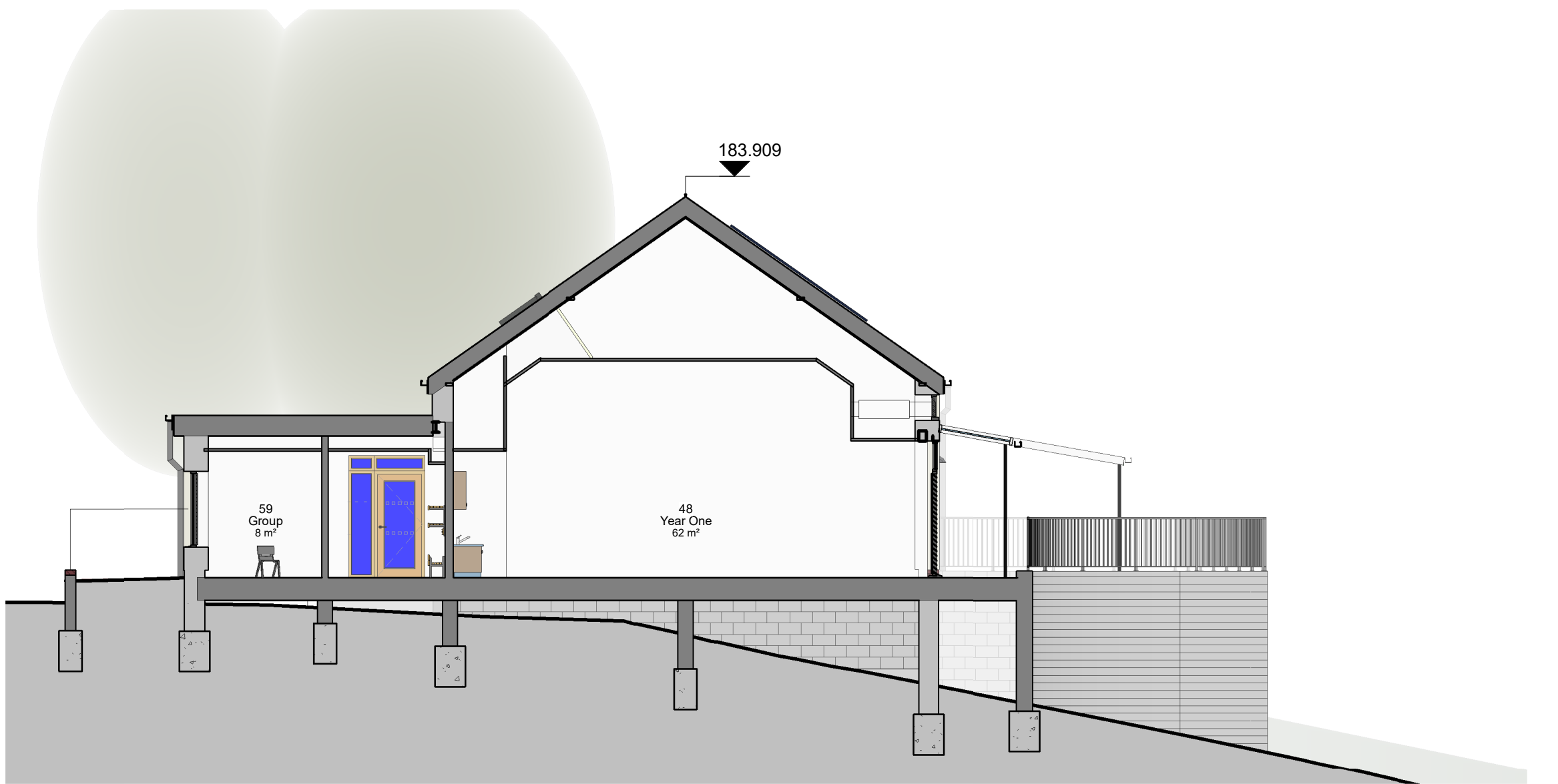


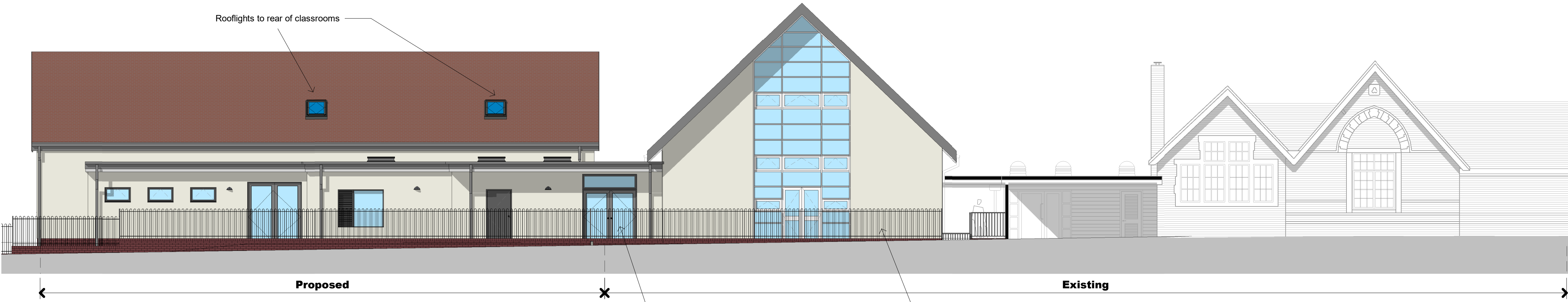
1 Proposed South East Elevation
1 : 100



2 Proposed North East Elevation
1 : 100



4 Cross Section
1 : 100



3 Proposed North West Elevation
1 : 100

Rev	Date	Description	Drawn	Issued	Rev'd	Aprv'd
Revision Schedule						
<div><div><div><div><div><div></div><div></div></div></div><div><div><div>JACOBS</div><div>2 Colmore Square, 38 Colmore Circus, Queensway, Birmingham B46BN</div><div>Tel +44 (0)121 237 4000</div><div>www.jacobs.com</div></div></div></div></div></div>						
Client						
Worcestershire County Council						
Project						
Fairfield First School, Bromsgrove, Expansion to PAN 30						
Drawing title						
Proposed Section and Elevations						
Drawing Status						
Planning						
Scale		1 : 100		DO NOT SCALE		
Jacobs No.						
JPI No.		BW40005L QCA-JAC-00-GF-DR-A- 0101				
Drawing Number			Sheet No.		Rev	
BW40005L QCA-JAC-00-GF-DR-A- 0101						
This drawing is not to be used in whole or part other than for the intended purpose and project as defined on this drawing. Refer to the contract for full terms and conditions.						